



GUI4ODR - Benutzeroberfläche






driven by

GUI4ODR


- Die Benutzeroberfläche für die ODR-mmbTools -

Immanuel Friedrichsen

MedienColloquium - 15.03.2017



GUI4ODR - Benutzeroberfläche



Überblick

GUI

Rahmenbedingung

Anforderungen

Optionale Software

Signalfluss der ODR-mmbTools



GUI-Live-Vorführung

Ausblick

Immanuel Friedrichsen

2

MedienColloquium - 15.03.2017

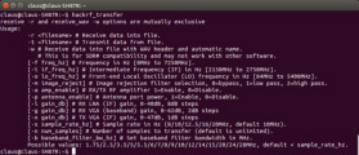

GUI4ODR - Benutzeroberfläche


Grafische Benutzeroberfläche?

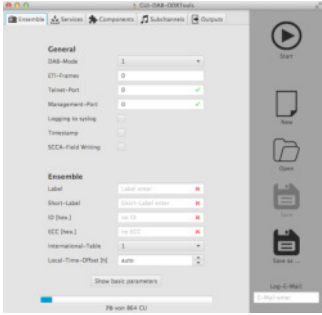
Skripts & Konsole


```


[remotecontrol]
telnetport=2321
[inputs]
SMBHost=10.10.10.10
SMBUser=administrator
SMBPass=1234567890
[filters]
filter=filter.txt
output=filter.txt
[remotecontrol]
general {
  hostname {
    address=10.10.10.10
    port=2321
  }
  remotecontrol {
    telnetport=2321
    username {
      user=administrator
      password=1234567890
    }
  }
  [filter] {
    filter=filter.txt
    output=filter.txt
  }
}
        
```




Benutzeroberfläche












Immanuel Friedrichsen
3
MedienColloquium - 15.03.2017

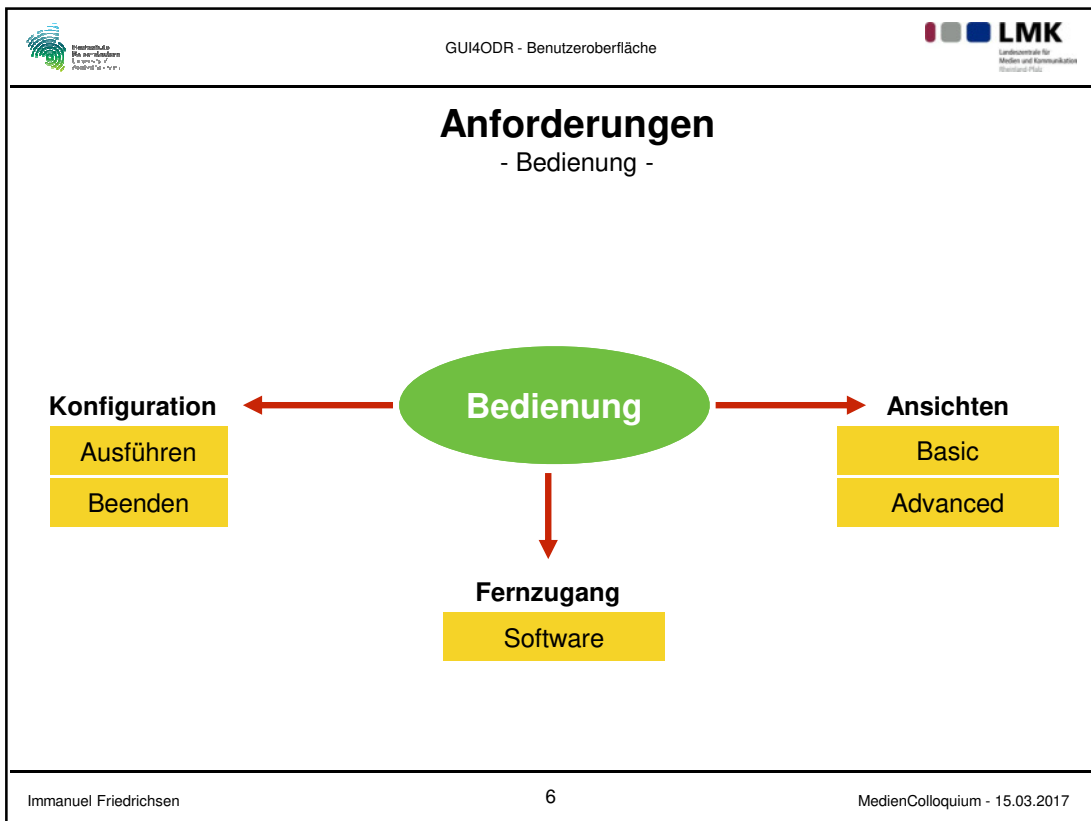
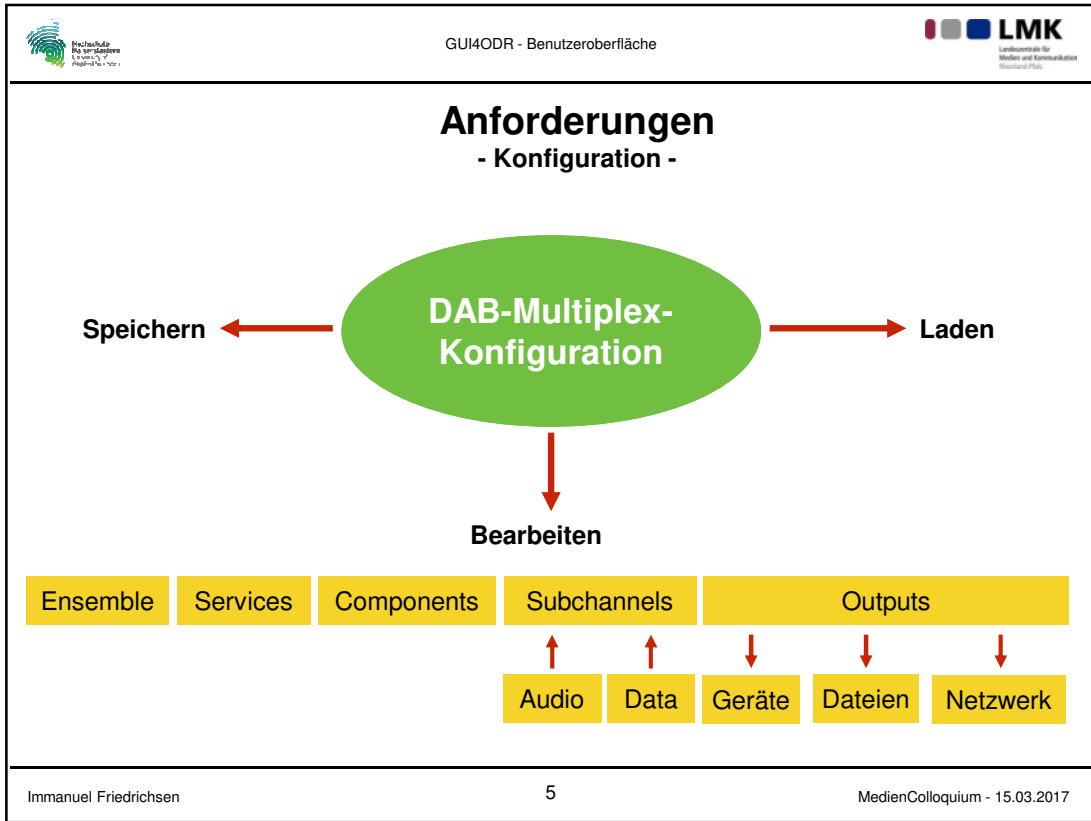

GUI4ODR - Benutzeroberfläche


Rahmenbedingungen



- Open Source Software
- Konfiguration erstellen auf Windows/Unix/Mac OS
- Ausführung & Überwachung auf Unix
- Fernzugang
- E-Mail Benachrichtigung bei Fehlerfall
- Benutzerhandbuch in Englisch & Deutsch
- flexibles & schlankes Programm

Immanuel Friedrichsen
4
MedienColloquium - 15.03.2017





GUI4ODR - Benutzeroberfläche



Optionale Software zur Bedienung



TeamViewer






Multiplexgenerator


Immanuel Friedrichsen

7

MedienColloquium - 15.03.2017

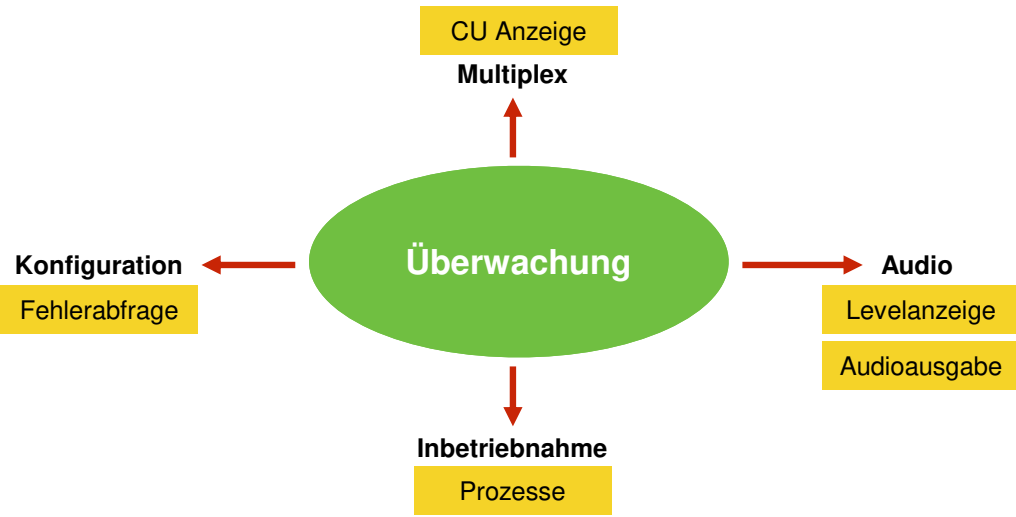


GUI4ODR - Benutzeroberfläche



Anforderungen

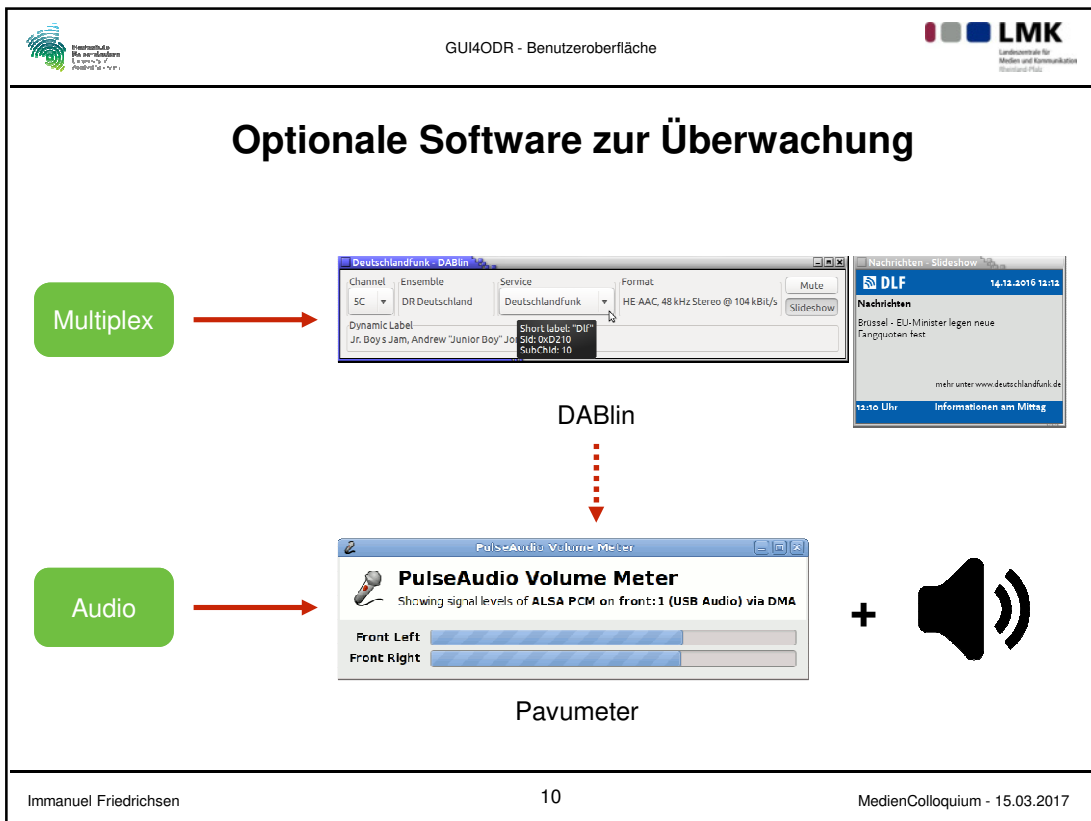
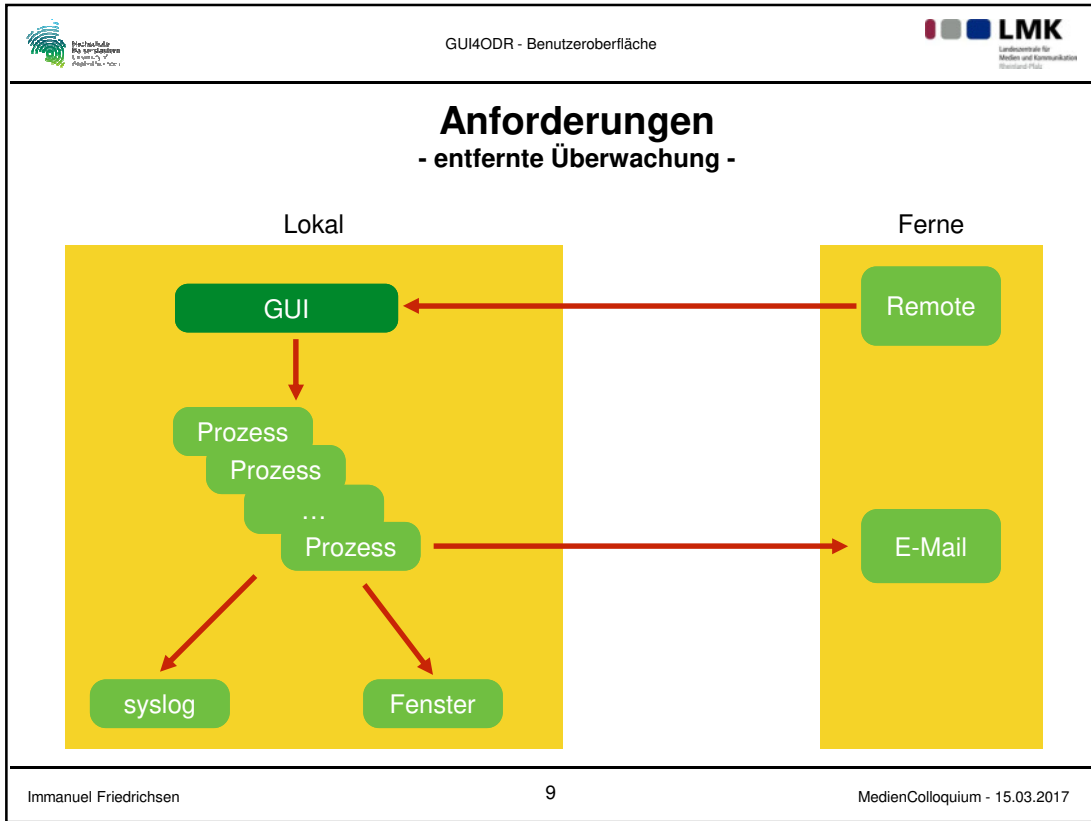
- lokale Überwachung -

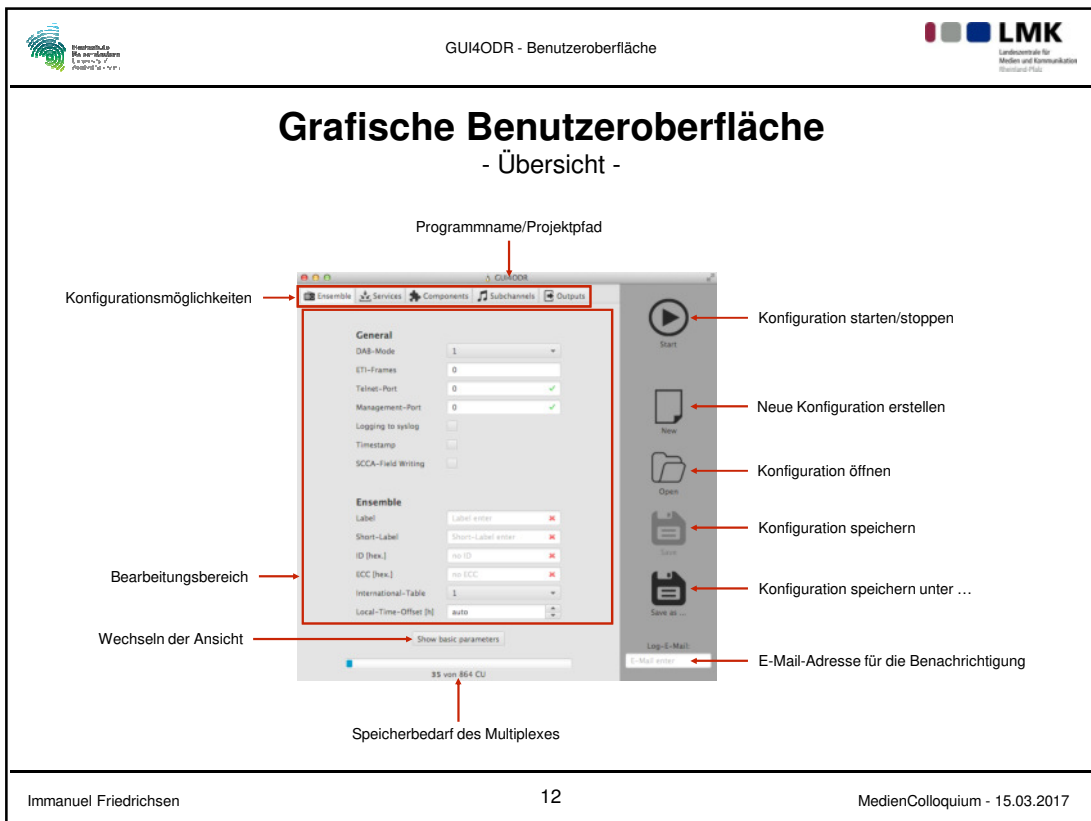
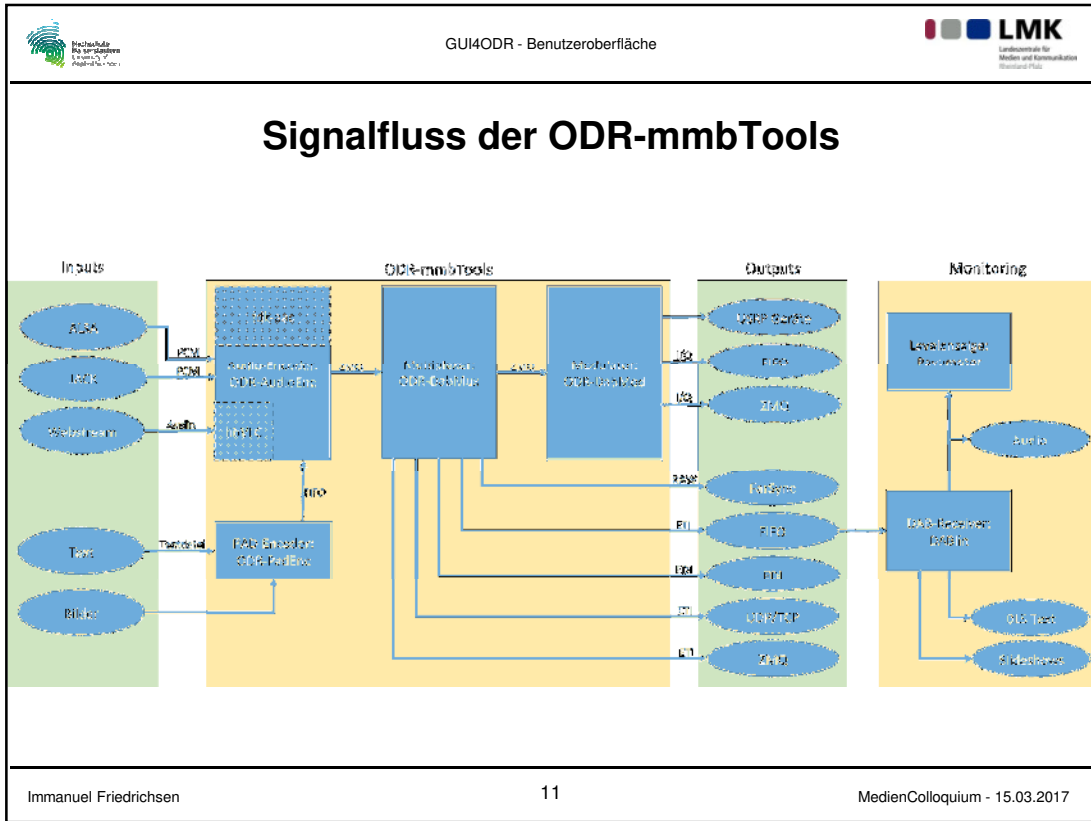




Immanuel Friedrichsen

8


MedienColloquium - 15.03.2017






GUI4ODR - Benutzeroberfläche


Ausblick




Weiterentwicklung durch die ODR-Community

- ➔ weitere Ausgangsschnittstellen (HackRF, LimeSDR, ...)
- ➔ weitere Eingangsmöglichkeiten beim Subchannel (ZeroMQ-Eingang)
- ➔ mehrsprachige Benutzeroberfläche (DE, FR, ...)

Software-Quelle: <https://github.com/immfri/gui-dab-odrTools>

Immanuel Friedrichsen
13
MedienColloquium - 15.03.2017


GUI4ODR - Benutzeroberfläche


Vielen Dank für Ihre Aufmerksamkeit



Noch Fragen?

Immanuel Friedrichsen
14
MedienColloquium - 15.03.2017